

PAYMENT FOR ENVIRONMENTAL SERVICES

CO-INVESTMENT FOR WATERSHED CONSERVATION BASED ON SERVICES



BUSSINESS AS USUAL

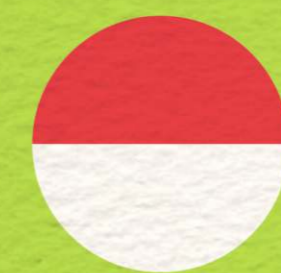
BEHAVIOR CHANGING OF ENVIRONMENTAL SERVICES SUPPLIER

ENVIRONMENTAL SERVICES

IS A BENEFIT THAT WERE GIVEN BY ECOSYSTEM IN DIRECT OR INDIRECT WAY FOR HUMAN PROSPERITY

PAYMENT FOR ENVIRONMENTAL SERVICES (PES) SCHEME

IS A PERFORMANCE-BASED VOLUNTARY INCENTIVE MECHANISM PROVIDED TO AGRICULTURAL AND FOREST LAND MANAGERS INVOLVED IN THE PROVISION OF ENVIRONMENTAL SERVICES. THIS SCHEME BECAME ONE OF THE MECHANISMS ENVIRONMENTAL CONSERVATION POLICIES AIMED AT MAINTAINING THE SUPPLY AND AVAILABILITY OF ENVIRONMENTAL SERVICES IN A SUSTAINABLE MANNER



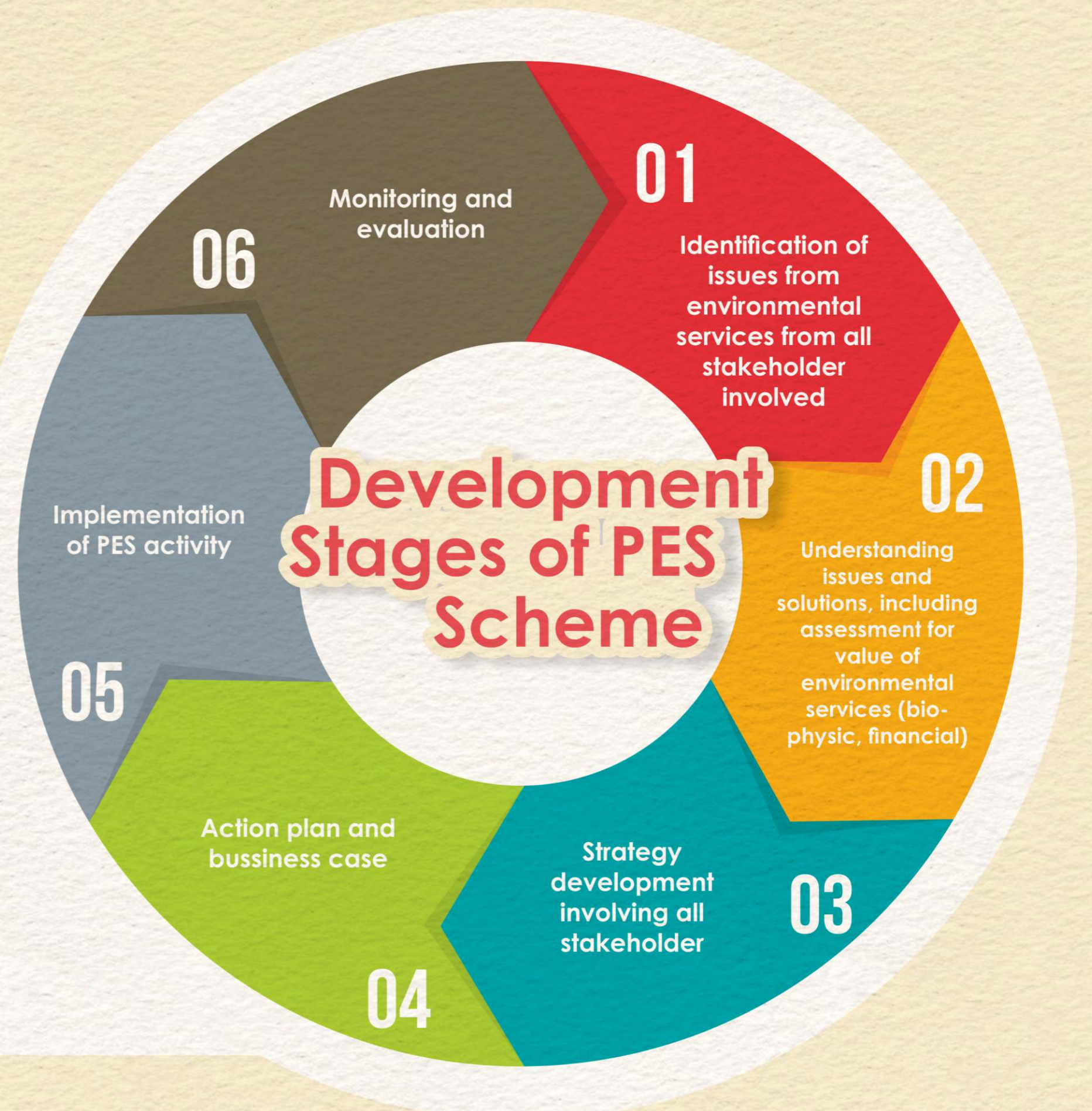
IN INDONESIA, PES IS LISTED AS ONE OF THE POLICY SUPPORT TOOLS IN LAW 32/2009 ON ENVIRONMENTAL MANAGEMENT AND CONSERVATION

SUSTAINABLE AGRICULTURAL PRACTICES BASED ON AGROFORESTRY TREES
ENVIRONMENTAL OR ECOSYSTEM SERVICES

FINANCIAL—NON FINANCIAL INCENTIVE

CONTRIBUTION AND AWARENESS OF ENVIRONMENTAL SERVICES USER

Development Stages of PES Scheme



STAGE 1&2

Understanding of landscape character, identification of problems and potential solutions through various research in the field

STAGE 5

Training and preparation for each implementer parties of PES Scheme

STAGE 3&4

Participative PES Scheme Development with stakeholders

STAGE 6

Monitoring and evaluation of PES Scheme Implementation

FURTHER INFORMATION, PLEASE CONTACT:

WORLD AGROFORESTRY CENTRE (ICRAF)

Beria Leimona (l.beria@cgiar.org), Ni'matul Khasanah (n.khasanah@cgiar.org), Noviana Khususiyah (n.khususiyah@cgiar.org)